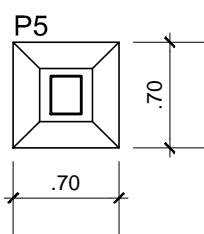
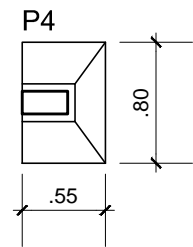
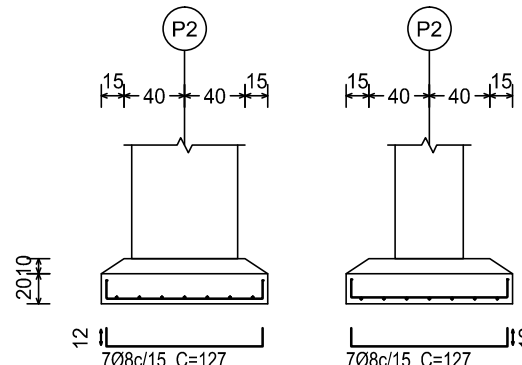


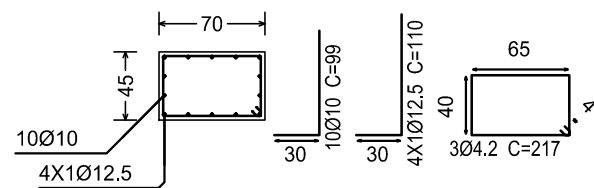
Fundação Guarita - Superfície total: 3,65 m2			
Elemento	Formas (m2)	Volume (m3)	Barra (kg)
Sapatas	12,88	1,90	60
Índices (por m2)	3,528	0,521	16,44



P2

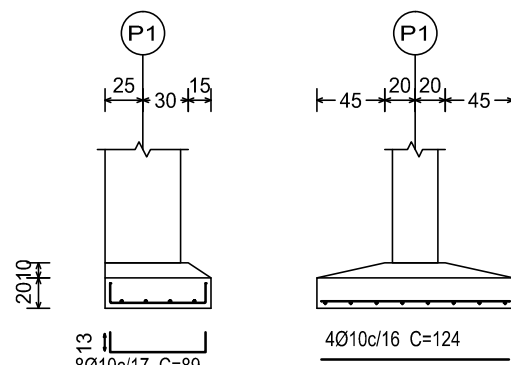


P2

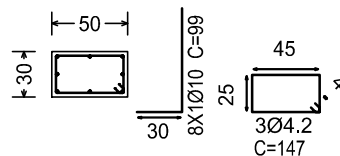


Resumo Aço Fundação		Comp. total (m)	Peso+10% (kg)
Detalhamento fundação			
CA-50-A	Ø8	45.3	20
	Ø10	37.8	26
	Ø12.5	11.0	12
CA-60-B	Ø4.2	20.6	2
Total			60

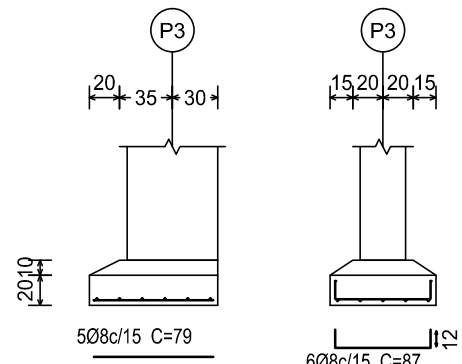
P1



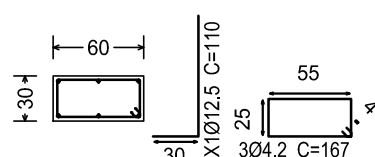
P1



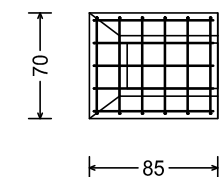
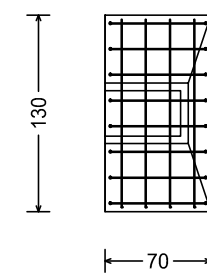
P3



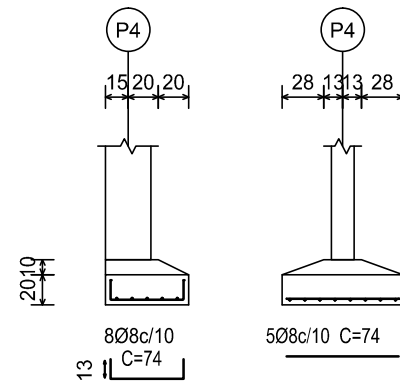
P3



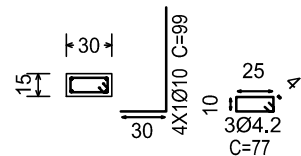
Fundação
Detalhamento fundação
Concreto: C25, em geral
Escala: 1:50



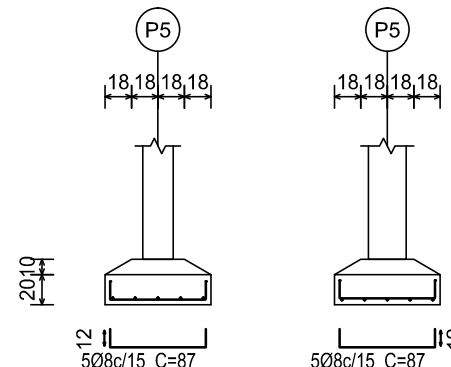
P4



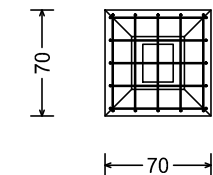
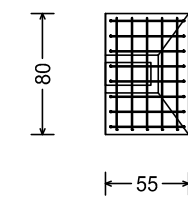
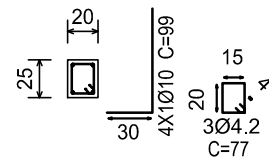
P4



P5



P5



DPO- DIRETORIA DE PROJETOS E OBRAS
Rua Gonçalves Chaves, 3218 - CEP 96015-960 - PELOTAS/RS
Fones: (53) 3026.8900 / 3026.8908 / 3026.8909
dpo@ifsul.edu.br / dpo_cproj@ifsul.edu.br / dpo_cfisc@ifsul.edu.br

RESPONSÁVEL TÉCNICO
PROJETO

RESPONSÁVEL TÉCNICO
EXECUÇÃO

PROPRIETÁRIO

CAMPUS SANTANA DO LIVRAMENTO
AV. PAUL HARRIS, Nº 410

PROJETO ESTRUTURAL

ÁREA DA OBRA
4.612,45 m²

VISTO

ETAPA 2 - REFORMAS E ADAPTAÇÕES -
FUNDAÇÕES DA GUARITA

OBRA
CSL 002/2015

DESENHO
PLATÃO

DATA
MAIO/2016

ESCALA
1/50

PRANCHA
PES/07-17